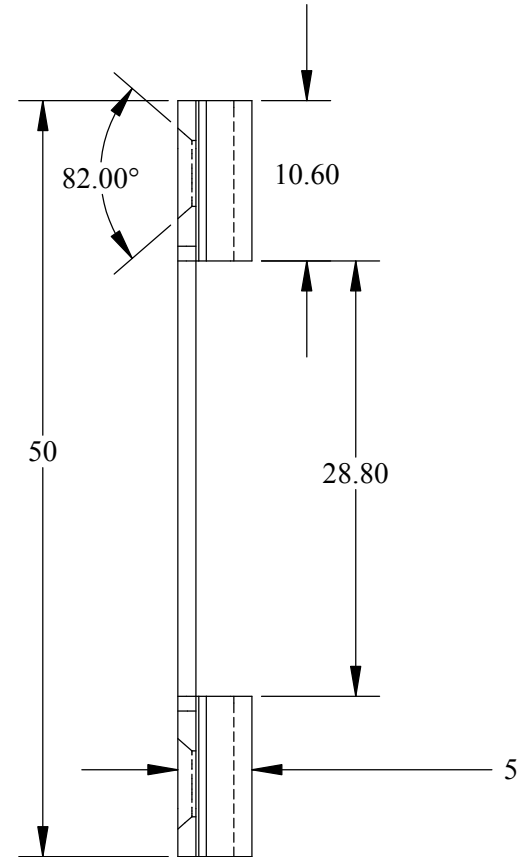
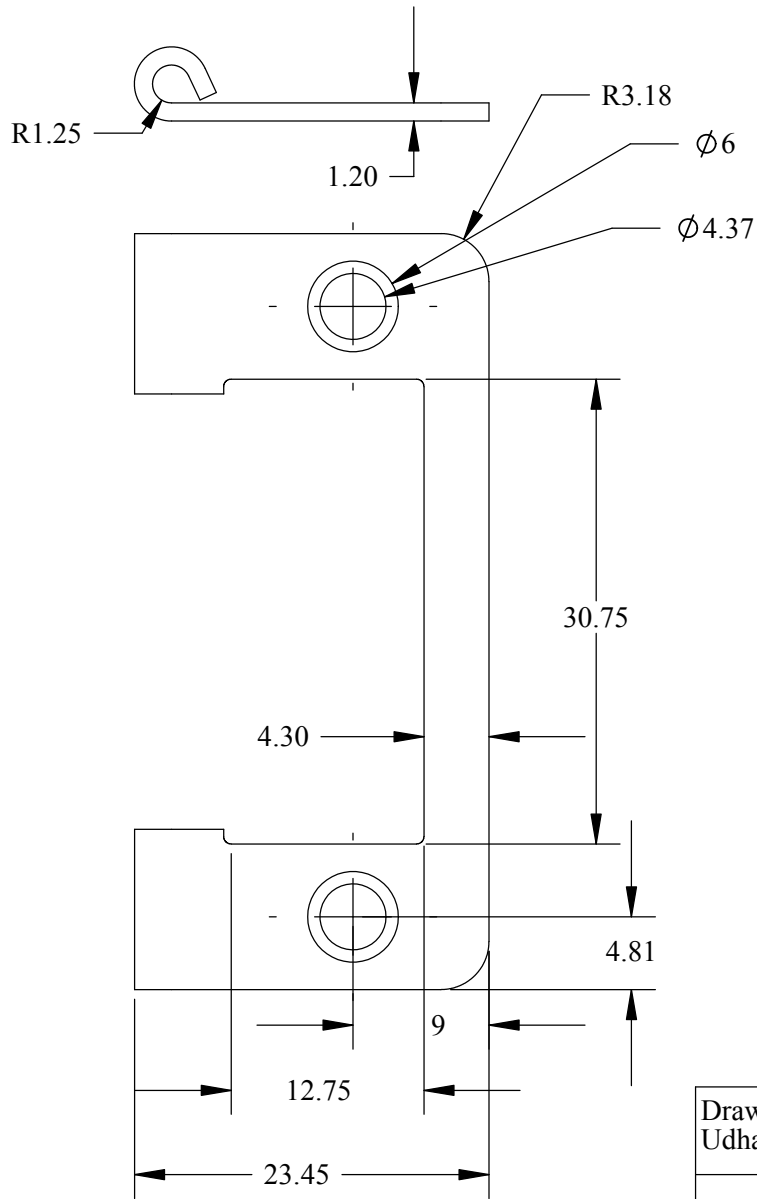


DETAIL A
SCALE 4 : 1

Drawn by: Udhay.N	Scale: 1:1	Date: 02/28/2005	HARDWARE RESOURCES		
<p style="text-align: center;">TOLERANCES</p> <p style="text-align: center;">UNLESS OTHERWISE SPECIFIED TOLERANCES ARE IN METRIC</p> <p>OVER ALL LENGTH $\pm 0.1\text{MM}$ ANGLES $\pm 0^\circ 30'$</p>			4319 MARLENA ST, BOSSIER CITY, LA71111		
			PART NAME:	2" NON MORTISE FIX PIN FLAT BACK 50MM HINGE	
			MATERIAL:	CRS	
			ITEM NO:	9800	
			PLATING:	AB, AC, B, BN, PB	

* - Critical Dimensions

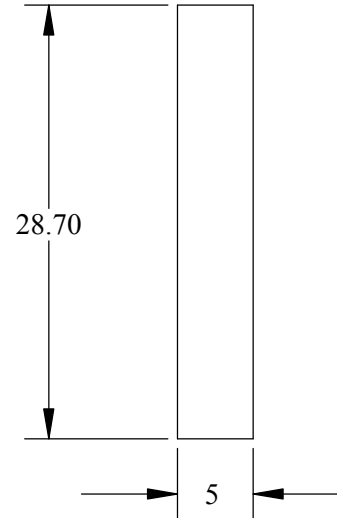
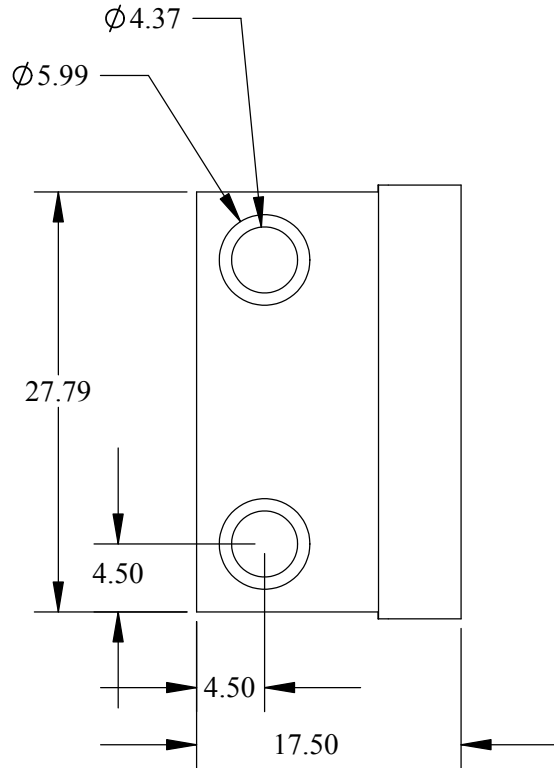
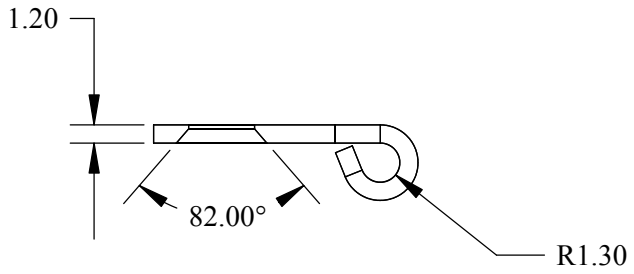
Sheet 1/4



* - Critical Dimensions

Sheet 2/4

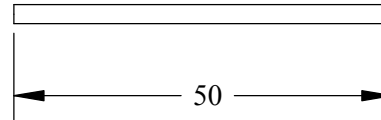
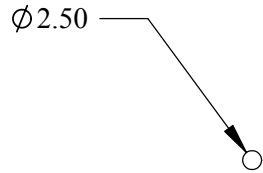
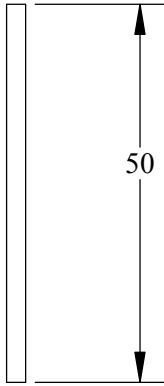
Drawn by: Udhay.N	Scale: 1:1	Date: 02/28/05	HARDWARE RESOURCES		
<p>TOLERANCES</p> <p>UNLESS OTHERWISE SPECIFIED TOLERANCES ARE IN METRIC</p> <p>OVER ALL LENGTH $\pm 0.1\text{MM}$ ANGLES $\pm 0^{\circ} 30'$</p>			4319 MARLENA ST, BOSSIER CITY, LA71111		
			PART NAME:	2" NON MORTISE FIX PIN FLAT BACK 50MM HINGE	
			MATERIAL:	CRS	
			ITEM NO:	9800	
			PLATING:	AB, AC, B, BN, PB	



Drawn by: Udhay.N	Scale: 1:1	Date: 02/28/05	HARDWARE RESOURCES		
<p style="text-align: center;">TOLERANCES</p> <p style="text-align: center;">UNLESS OTHERWISE SPECIFIED TOLERANCES ARE IN METRIC</p> <p style="text-align: center;">OVER ALL LENGTH $\pm 0.1\text{MM}$ ANGLES $\pm 0^\circ 30'$</p>			4319 MARLENA ST, BOSSIER CITY, LA71111		
			PART NAME:	2" NON MORTISE FIX PIN FLAT BACK 50MM HINGE	
			MATERIAL:	CRS	
			ITEM NO:	9800	
			PLATING:	AB, AC, B, BN, PB	

* - Critical Dimensions

Sheet 3/4



Drawn by: Udhay.N	Scale: 1:1	Date: 02/28/05	HARDWARE RESOURCES		
<p style="text-align: center;">TOLERANCES</p> <p style="text-align: center;">UNLESS OTHERWISE SPECIFIED TOLERANCES ARE IN METRIC</p> <p style="text-align: center;">OVER ALL LENGTH ±0.1MM ANGLES ±0° 30'</p>			4319 MARLENA ST, BOSSIER CITY, LA71111		
			PART NAME:	2" NON MORTISE FIX PIN FLAT BACK 50MM HINGE	
			MATERIAL:	CRS	
			ITEM NO:	9800	
			PLATING:	AB, AC, B, BN, PB	

* - Critical Dimensions

Sheet 4/4